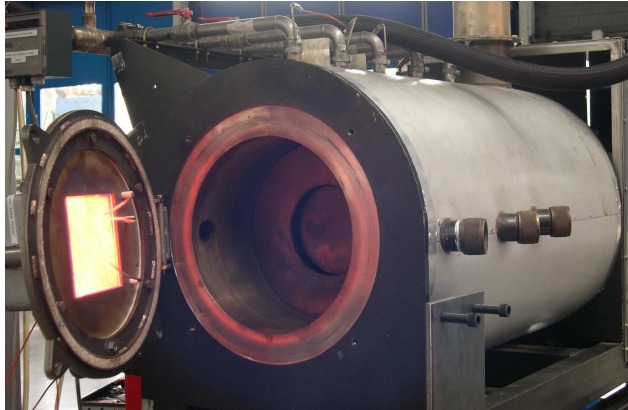


GDF SUEZ Infrared burner characterization

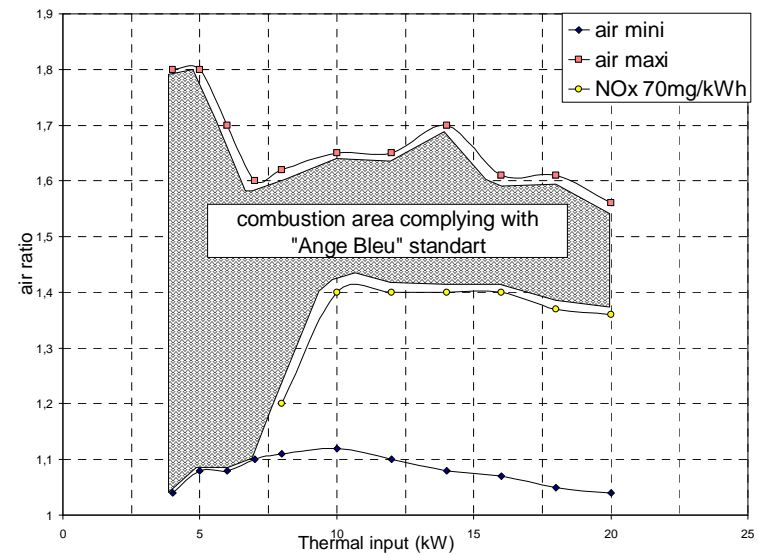


Characteristics :

- Maximum Thermal Input : 40 kW
- Size : $\varnothing = 0,28$ m - Length : 0 <> 0,84 m
- Cooling system : 5 independent water-cooled zones
- Optical control access
- Type of fuel : Natural Gas, H_2 , syngas
- Type of oxidant : Air, O_2

Main profit :

- dedicated to infrared burner characterization
- equivalent to a boiler (cool wall)



Example of burner characterization